

# Beyond Articulation: Options for Alignment in Concurrent Enrollment

## NACEP 2012

Marilyn Kenfield

Red Rocks Community College

Sheena Martin

Front Range Community College

Brandon Protas

Community College of Denver

Tammy Ward

Arapahoe Community College



# Session Overview

- **Colorado Context**
- **CTE Certificates**
- **College Pathways**
- **Discussion**

# The Colorado Paradox

## Highly educated workforce

- Colorado is #2 in the country for percentage of workforce over the age of 25 with a college degree
- But....this is largely due to an imported workforce from other states
- Colorado is doing a very mediocre job of graduating our own young people from college
- In other words, we have a “leaky pipeline”

# Graduation Pipeline in CO

**100**

In Colorado,  
for every 100 ninth  
grade students

**70**

students graduate  
from high school  
four years later

**44**

students  
immediately  
enter college

**26**

students are still  
enrolled in their  
second year

**22**

students graduate with either an associate's  
degree within three years or a bachelor's  
degree within six years

Source: NCES 2006

# Where are the Leaks?

Colorado ranks:

- 29th in terms of high school graduation
- 19<sup>th</sup> in college matriculation

The biggest leak in the pipeline occurs during the transition of high school graduates enrolling directly in college upon graduation

Colorado is striving to patch the leak

# 2009 Legislation: Concurrent Enrollment & ASCENT

## Concurrent Enrollment:

- Grades 9-12
- Districts pay for student tuition
- Intent is to increase access to college
- Classes at HS or on college campus w/HS or College Instructor

## ASCENT: 1<sup>st</sup>-year College / 5<sup>th</sup>-year HS Program

- Met high school graduation requirements
- Have at least 12 college credits (not Dev Ed)
- May complete a certificate or associate's degree
- All classes taken at college campus



# Individual Career and Academic Plan (ICAP):

Each school counselor or school administrator shall ensure that every student in grades nine through twelve and their parents or legal guardians has access to and assistance in the development of an ICAP.

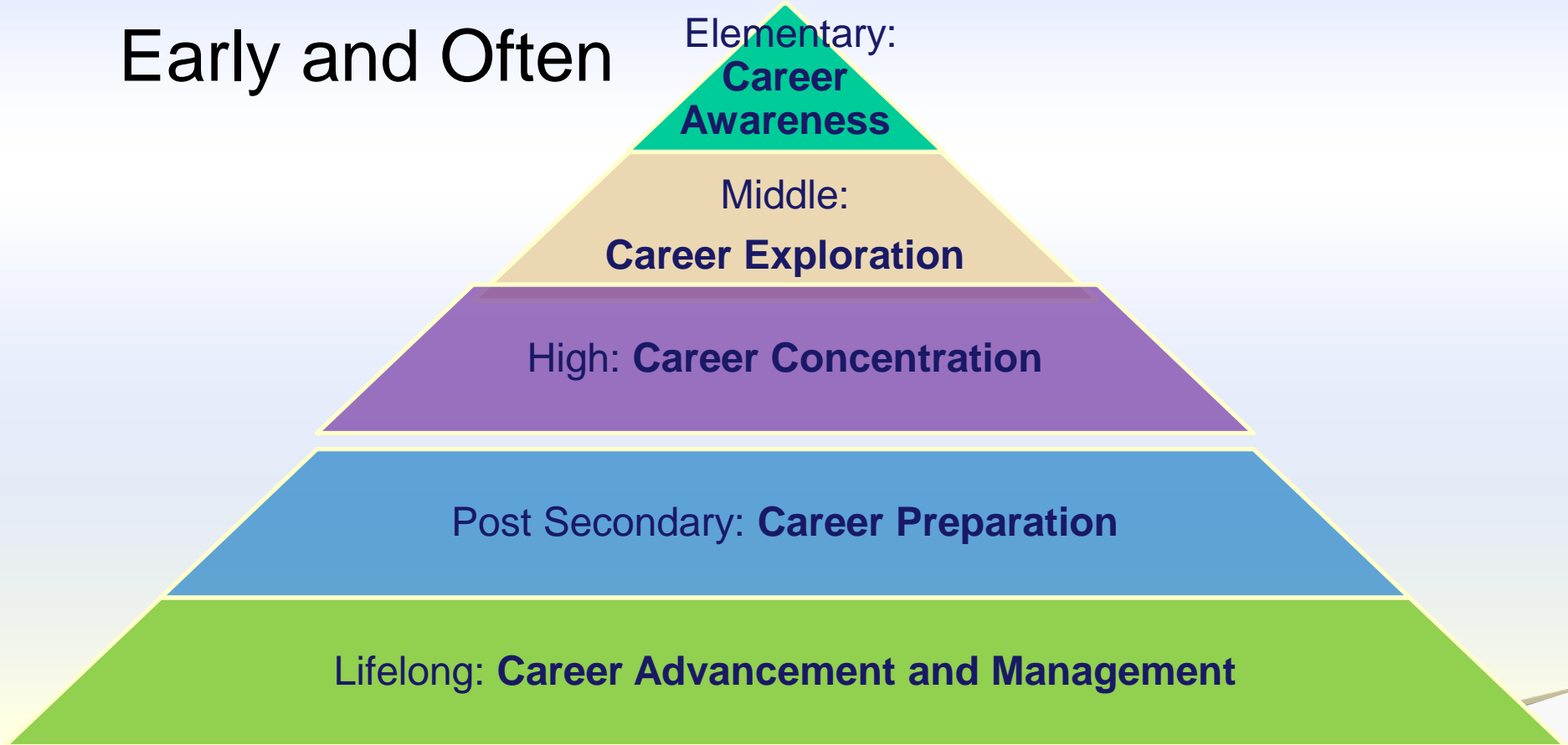
**An individualized plan, developed by all that have a vested interest to:**

- establish personalized academic and career goals
- explore postsecondary career and educational opportunities
- align course work and curriculum
- apply to postsecondary institutions
- secure financial aid
- ultimately enter the workforce



# Seamless Transition

Early and Often





# Plans of Study

**Colorado Community Colleges .com**

WHY APPLY | WHAT'S AVAILABLE | COLLEGE LOCATIONS | HOW TO PAY | GETTING STARTED | Google Custom Search GO

**Programs Available at Colorado Community Colleges**  
We have more than 800 programs from Aerospace to Zoology

- Agriculture, Natural Resources & Energy
- Business, Marketing & Public Administration
- Health Science, Criminal Justice & Public Safety
- Hospitality, Human Services & Education
- Skilled Trades & Technical Sciences
- STEM, Arts, Design, & Information Technology
- Transfer Degrees

## Agriculture, Natural Resources & Energy

### CAREER PATHWAYS

- **Agriculture, Food & Natural Resources**
  - Agribusiness Systems
  - Animal Science
  - Food Products & Processing Systems
  - Natural Resource & Environmental Systems
  - Plant Science
  - Power Structural and Technical Systems
- **Energy**
  - Electric Energy Transmission & Distribution
  - Electromechanical Generation & Maintenance
  - Energy Efficiency & Environmental Technology
  - Fossil Energy Extraction, Processing & Distribution
  - Renewable Energy Production

# Career Goal & Plans make a HUGE difference!

**Preliminary findings show desired learning outcomes  
were the best predictors of student success.**

- Students whose desire was to “Explore courses to decide career,” had the lowest graduation rate, 21%
  - This compares to a graduation rate for students who intend to, “Prepare to change careers,” of 78%
- Rossol & Byers, Johnson County Community College, NE
- Students with a pathway have a distinct map showing destination
  - Students are empowered with knowledge and tools to be successful

**Clearly, having a career goal and plan that a student is  
acting upon makes a big difference**

# School Partnerships



# Creating CTE Pathways

## CTE Focus

- Looking at articulation agreements
- Reviewing college certificates.  
How do articulated credits apply?

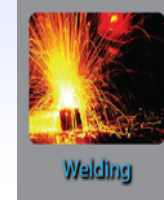
## Options

- Convert articulated courses to concurrent credit
- Pair articulated credit with concurrent credit

## Options, Pathways, Completion



# Example Pathway: Welding



**Articulated  
Credit**

**WEL 100**  
Safety for  
Welders  
(1 cr.)

+

**Concurrent  
Enrollment Credit**

**WEL 101**  
Allied Cutting  
Processes  
(4 cr.)

=

**Students  
graduate  
with  
Oxyacetylene  
Welding  
certificate!**

# Example Pathway: Automotive



Articulated credit

**ASE 100**  
Auto Shop  
Orientation  
(1 cr.)

+

Concurrent  
Enrollment Credit

**ASE 130**  
General Engine  
Diagnosis (2 cr.)

**ASE 160**  
Auto Engine  
Removal &  
Installation (1 cr.)

**ASE 161**  
Engine,  
Disassembly  
Diagnosis and  
Assembly (5 cr.)

=



**Students  
graduate  
with  
Engine Repair  
certificate!**



# Principal Questions



# Principal Questions





# Concurrent Enrollment Pathways

**College Prep for ASCENT Eligibility**  
**Accounting / Business / Technology**  
**Criminal Justice**  
**Engineering Graphics**  
**Foreign Languages**  
**General Education / Humanities**  
**Graphic Design**  
**Health Services**  
**Human services / Behavioral Sciences**  
**Visual Arts**



# General College Prep for ASCENT eligibility

<b>AAA 109</b>  Advanced Academic Achievement	<b>BTE 100/102</b>  Keyboarding & Keyboarding Apps	<b>CIS 118</b>  Intro to PC Applications	<b>ENG 121</b>  English Composition
		<b>ENG 090</b>  Basic Composition	
Year 1		Year 2	
<b>ENG 090:</b> Basic Composition is recommended, but does not count towards ASCENT eligibility			

# Criminal Justice

<b>CRJ 110</b>	<b>CRJ 125</b>	<b>CRJ 127</b>	<b>CRJ 145</b>	<b>CRJ 135</b>	
<b>Intro to Criminal Justice</b>	<b>Law Enforcement Operations</b>	<b>Crime Scene Investigation</b>	<b>Correctional Process</b>	<b>Judicial Function</b>	
<b>Year 1</b>		<b>Year 2</b>		<b>Year 3</b>	
<b>Additional recommended courses:</b> <b>ENG 121: English Composition</b>					
<b><u>Possible Certificates:</u></b> CRJ Homeland Security CRJ Applied Forensic		<b><u>Possible Degrees:</u></b> <b>Associate of Arts</b> Associate of Applied Science Criminal Justice Emphasis		<b><u>Possible Careers:</u></b> Police Officer Probation / Parole Officer Court Administration Social Services	

# Visual Arts

<b>ART 121</b>  Drawing I	<b>ART 110</b>  Art Appreciation	<b>ART 111</b>  Art History Ancient to Medieval	<b>ART 112</b>  Art History Renaissance to Modern	<b>ART 221</b>  Drawing II	<b>ART 131</b>  Visual Concepts 2-D Design
Year 1		Year 2		Year 3	
<b>Additional recommended courses:</b> <b>ENG 121:</b> English Composition <b>HIS 101:</b> Western Civilization: Antiquity-1650 and/or <b>HIS 102:</b> Western Civilization 1650–Present <b>MAT 120:</b> Mathematics for Liberal Arts or <b>MAT 121:</b> College Algebra					
<b><u>Possible Certificates:</u></b>  CCD Visual Arts does not offer certificates at this time		<b><u>Possible Degrees:</u></b> <b>Associate of Arts</b>  Visual Arts Emphasis		<b><u>Possible Careers:</u></b>  Professional Visual Artist/Assistant Museum or Art Gallery Staff Retail Display Design, Print or Online ‘Zine’ Illustrator Art Coordinator/Consultant for Non-Profit	

# Discussion

- What models are other programs using?
- Biggest challenges / successes?
- How do high schools and colleges view CTE alignment with Concurrent Enrollment?
- Articulation vs. Concurrent Enrollment?